

Abb. 1

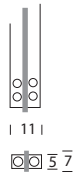


Abb. 2

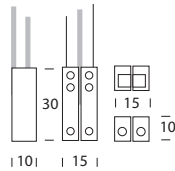


Abb. 3

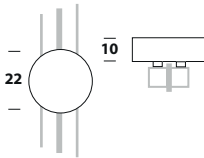


Abb. 4

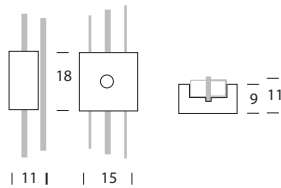
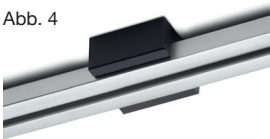


Abb. 5

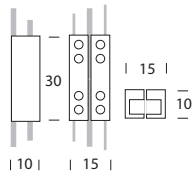
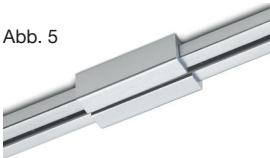


Abb. 6

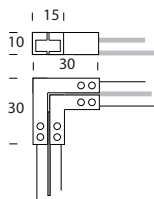
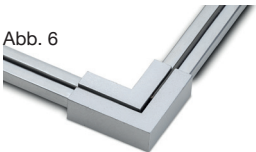
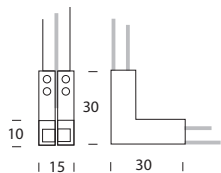


Abb. 7



Beschreibung

12V Magnetschienen-System für Beleuchtung auf engstem Raum, zB. Vitrinen.
Geeignet für Strahler der Microline-Serie.
Oberflächen: weiß, schwarz.
5 Jahre Garantie.



Technische Daten + Abmessungen

Bestell-Nr.	Ausführung	Abbildung
Microline-Schiene		
3-308-20-9	silber matt	1
3-308-20-2	black-velour	-
Microline-Einspeisung		
4-425-31-9	silber matt	2
4-425-31-2	schwarz	-
Microline-Einspeisung über Magnetadapter		
4-425-32-2	schwarz	3
Microline-Halter		
4-425-06-9	silber matt	4
4-425-06-2	schwarz	-
Microline-Verbinder, gerade		
4-425-45-9	silber matt	5
4-425-45-2	schwarz	-
Microline-L-Verbinder, horizontal		
4-425-51-9	silber matt	6
4-425-51-2	schwarz	-
Microline-L-Verbinder, vertikal		
4-425-50-9	silber matt	7
4-425-50-2	schwarz	-
Transformatoren für Microline-System (Mean-Well)		
9-607-41-1	40 VA / 12 V	
9-607-60-1	60 VA / 12 V	
9-607-42-1	40 VA / 24 V	